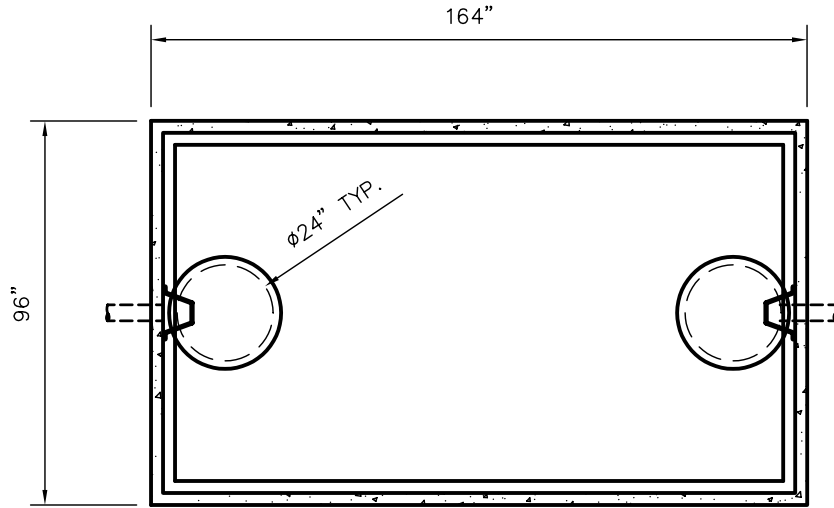


WLP2000-MR GREASE INTERCEPTOR TANK SPECIFICATIONS



TOP VIEW

DIMENSIONS:

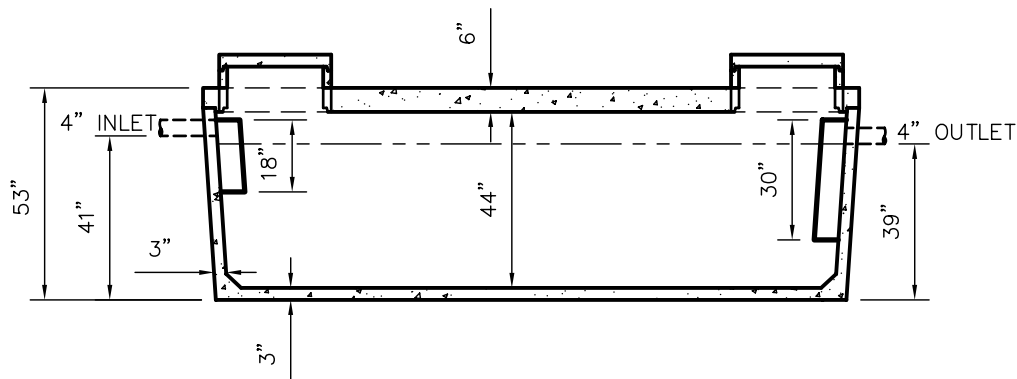
- WALL: 3"
- BOTTOM: 3"
- COVER: 6"
- MANHOLE: 24" I.D. PRECAST CONCRETE RISER
- HEIGHT: 53" O.D.
- LENGTH: 164" O.D.
- WIDTH: 96" O.D.
- BELOW INLET: 41" O.D.
- LIQUID LEVEL: 36"
- WEIGHT: BOTTOM 11,260 LBS.
COVER 8,170 LBS.

- INLET AND OUTLET:**
4" CAST-A-SEAL BOOT OR EQUAL
GASKET, CAST-A-SEAL BOOT OR EQUAL
- INLET AND OUTLET BAFFLE:**
AS SHOWN

LIQUID CAPACITY: 56.27 GAL/IN

LOADING DESIGN: 8' 0" UNSATURATED SOIL

TANK CAN BE USED AS:
GREASE INTERCEPTOR



SIDE VIEW

CUSTOMIZED TANKS:
TANKS CAN BE CUSTOMIZED CONTACT WIESER CONCRETE
TANKS ARE MANUFACTURED TO MEET OR EXCEED ASTM C-1227 REQUIREMENTS

SCALE: 1/4" = 1'	REV NO.	DATE:	
DRAWN BY: SWT			
DATE: JANUARY 2007			
FILE: WLP2000GI-MR			
WIESER CONCRETE			
W3716 US HWY10, MAIDEN ROCK, WI 54750			
800-325-8456			
WLP2000GI-MR	SEPTIC MANUAL		
	REV. JAN. 2007		
SHEET NO.	0 OF 0		