



WIESER CONCRETE PRODUCTS, INC.

CONNECTIONS

Visit us on the Web: www.wieserconcrete.com



OFF AND RUNNING

The seminar season has begun and is off to a flying start. Our first Onsite Wastewater Training Seminar was held at our Portage production facility on Thursday February 28th. We welcomed over 250 participants to our Portage Onsite Wastewater Training Seminar.

This year we have added an additional location to accommodate customers in the Rhinelander area. The Rhinelander Onsite Wastewater Training Seminar will be held on Thursday, March 27th at the Pine



Hands-on Break Out Sessions

Lake Fire Hall, 4197 River Road in Rhinelander, Wisconsin.

In addition to Portage and Rhinelander, there are also seminars scheduled for Shell Lake, Wisconsin, Fond du Lac, Wisconsin and Maiden Rock, Wisconsin. Advance registration is encouraged.

Our one-day seminars provide 6 continuing education credits for: Journeyman Plumber, Journeyman Plumber-Restricted Service, Master Plumber, Master Plumber-Restricted Service, POWTS Inspector, POWTS Maintainer, Soil Tester.

Wieser Concrete Recognized for Excellence at 2008 NPCA National Convention in Denver

Wieser Concrete team members were awarded the **2007 Quality Merit Award** during the National Precast Concrete Association (NPCA) annual convention held in February in Denver, Colorado.

The **2007 Quality Merit Award** was awarded to the team members of Wieser Concrete Products, Inc. of Maiden Rock, Wisconsin in recognition

for achieving one of the top 25 scores in NPCA's Plant Certification Program.

Participation in the NPCA Plant Certification Program affirms an ongoing commitment to producing quality precast concrete products. This includes a dedication to continuous improvement in product design, raw materials, manufacturing processes, safety, employee education and customer service.

Show Schedule

For Show Locations, Visit our Website

Show	Dates
MOWA Annual Convention	March 3-5, 2008
Eau Claire Farm Show	March 4-5, 2008
Onsite Training Seminar	March 6, 2008
PDPW Annual Meeting	March 11-12, 2008
Onsite Training Seminar	March 13, 2008
Central Plains Dairy Expo	March 19-20, 2008
Onsite Training Seminar	March 20, 2008
Onsite Training Seminar	March 28, 2008
WI Public Service Farm Show	April 1-3, 2008

WIESER CONCRETE

Innovation, Quality and Service Since 1965

MAIDEN ROCK—1-800-325-8456

PORTAGE—1-800-362-7220

FOND DU LAC—1-800-641-5937

SPOONER—1-800-336-3416

A WINNING COMBINATION

Steve Voight of Steve's Excavating, Inc. in St. Cloud, Minnesota discovered a challenge for a mall project in St. Augusta, Minnesota.

Upon reviewing the architect's plans, Steve discovered that there was only 2,500 square feet allotted for an onsite system that would treat public restrooms, eight businesses, and a 125-seat restaurant. Insufficient room for any onsite system forced the developers to eliminate three stores to create the necessary space. The onsite system designer, Tim Haeg of Watab, Inc. in Saint Joseph, faced continued site constraints, an artificially lowered water table, only one available drainfield area with proper soils and the knowledge that if one more store was removed, the developers couldn't afford to build the Delux Business Center.

Haeg's solution utilized a grease interceptor, septic tank, flow equalization tank, fixed activated sludge treatment (FAST) unit, dosing tank, and a three-zone drainfield. This system is the largest of its kind in Stearns County and is designed to handle



Setting Top Section of Grease Interceptor

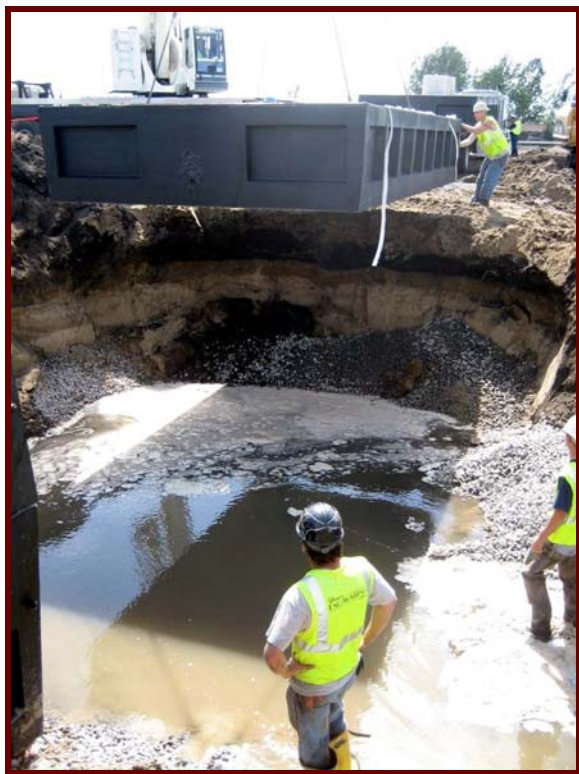
5,617 gpd. It was oversized by 25% as a safety factor with a three-zone drainfield to allow a rest and recovery rotation. The system's major components included several **Wieser Concrete** precast tanks including:

- 5,000-gallon, single-compartment grease interceptor tank
- 6,100-gallon, single-compartment septic tank with dual inlets
- 7,700-gallon, single-compartment flow equalization tank with two LE40, 4/10-hp pumps
- 9,000-gallon pretreatment tank with 9.0 High Strength FAST aerobic treatment unit
- 2,000-gallon dosing tank with 36-inch square hatches and three LE100, 1-hp, high-head pumps

The system also included 468 Quick4 Standard Chambers, 24 Valve Boxes and a custom control panel with telemetry.

Installation began with the drainfield which required a soil correction due to the high water table. Once correction was completed, installation of the tanks began with the grease interceptor and dosing tanks being set by Wieser's boom truck. The remaining tanks were set with a 30-ton crane provided by Landwehr Construction.

More details of this project can be found in the January 2008 issue of Onsite Installer.



Setting Bottom Section of 7700 Gallon Tank



Setting Top Section of 7700 Gallon Tank