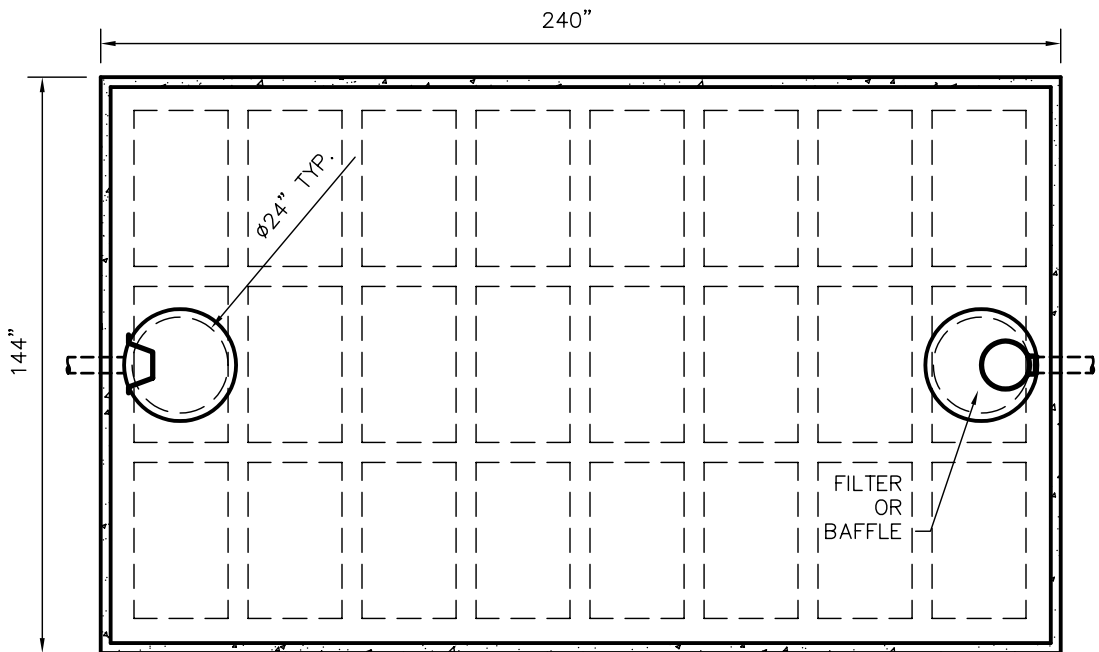


W9100 TANK SPECIFICATIONS



TOP VIEW

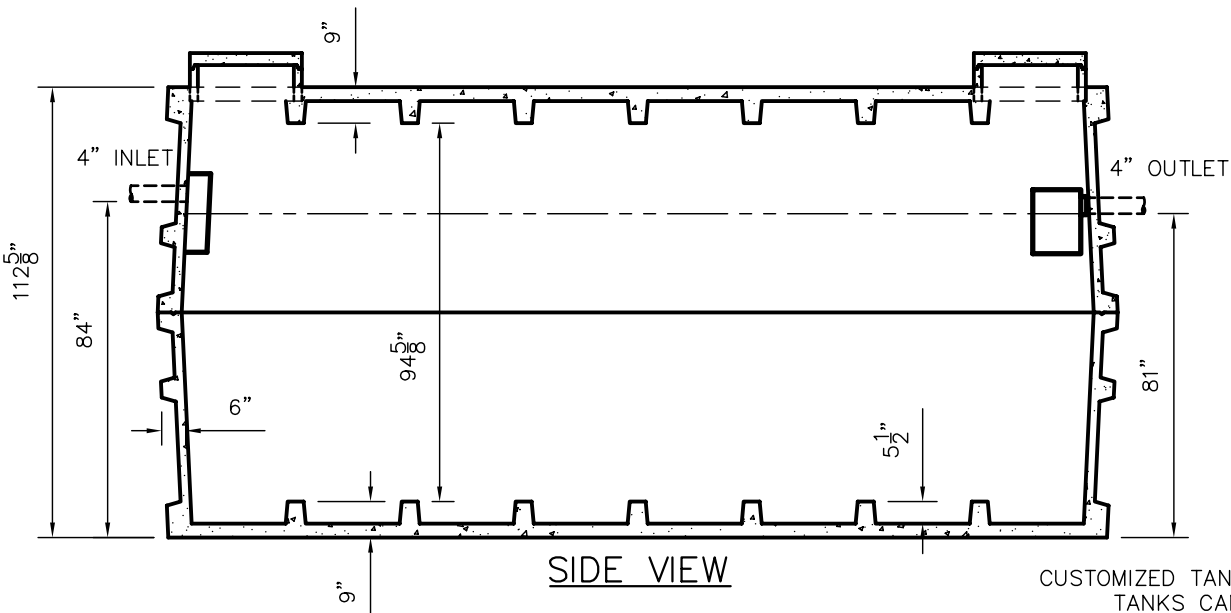
DIMENSIONS:
 WALL: 6" RIBBED
 COVER: 9" RIBBED
 BOTTOM: 9" RIBBED
 MANHOLE: 24" I.D. PRECAST CONCRETE RISER
 HEIGHT: 112 5/8" O.D.
 LENGTH: 240" O.D.
 WIDTH: 144" O.D.
 BELOW INLET: 84" O.D.
 LIQUID LEVEL: 72"
 WEIGHT: 29,000 LBS. PER SECTION

INLET AND OUTLET:
 4" CAST-A-SEAL BOOT OR EQUAL
 GASKET, CAST-A-SEAL BOOT OR EQUAL
 INLET AND OUTLET BAFFLE AND FILTER:
 WISCONSIN, SEE DETAIL #10
 (OTHER STATES SEE CHART)

LIQUID CAPACITY: 126.90 GAL/IN

LOADING DESIGN: 8' 0" UNSATURATED SOIL

TANK CAN BE USED AS:
 SEPTIC/ HOLDING/ PUMP OR SIPHON



SIDE VIEW

CUSTOMIZED TANKS:
 TANKS CAN BE CUSTOMIZED CONTACT WIESER CONCRETE

TANKS ARE MANUFACTURED TO MEET OR EXCEED ASTM C-1227 REQUIREMENTS

SCALE: 1/4" = 1'	REV NO.	DATE:
DRAWN BY: SWT		
DATE: JANUARY 2008		
FILE: W9100		
WIESER CONCRETE		
W3716 US HWY10, MAIDEN ROCK, WI 54750		
800-325-8456		
W9100	SEPTIC MANUAL	
	REV. JAN. 2008	
SHEET NO.	0 OF 0	