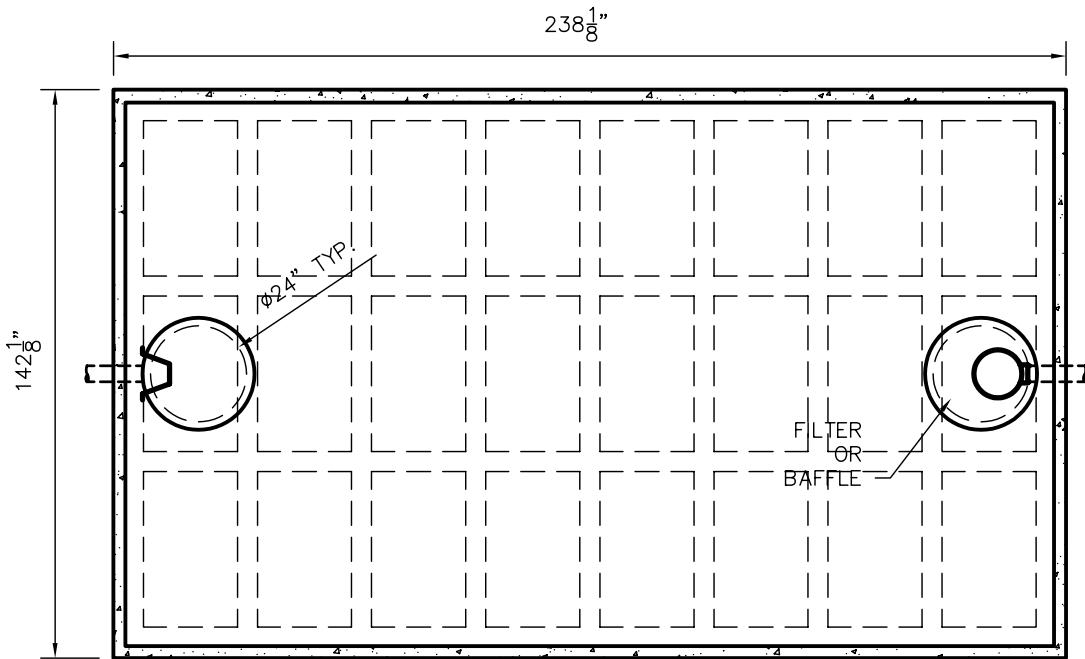


W7700 TANK SPECIFICATIONS

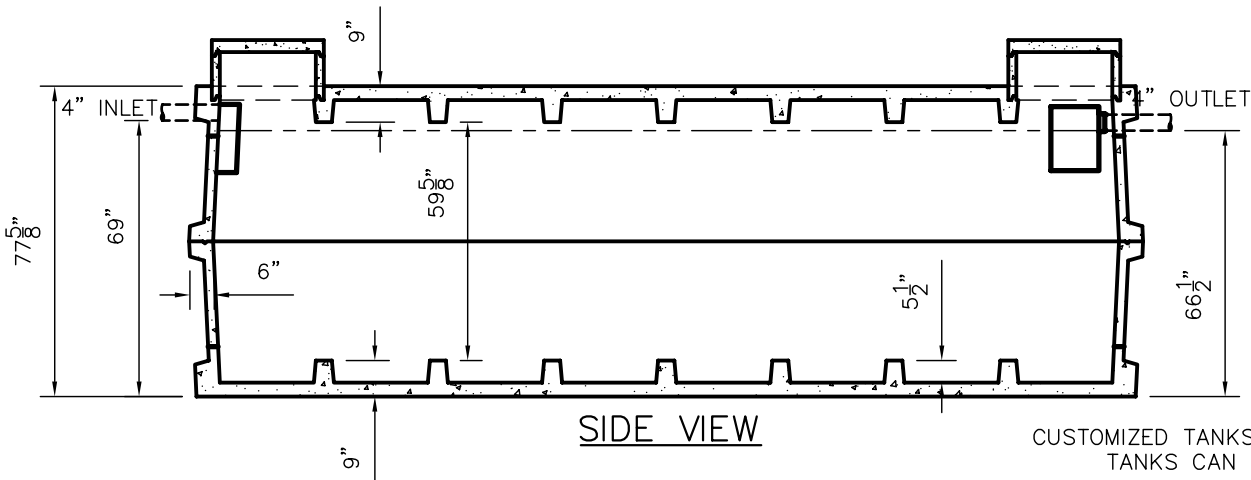
DIMENSIONS:
 WALL: 6" RIBBED
 COVER: 9" RIBBED
 BOTTOM: 9" RIBBED
 MANHOLE: 24" I.D. PRECAST CONCRETE RISER
 HEIGHT: 77 5/8" O.D.
 LENGTH: 238 1/8" O.D.
 WIDTH: 142 1/8" O.D.
 BELOW INLET: 68 1/2" O.D.
 LIQUID LEVEL: 63"
 WEIGHT: 23,500 LBS. PER SECTION

INLET AND OUTLET:
 4" CAST-A-SEAL BOOT OR EQUAL
 GASKET, CAST-A-SEAL BOOT OR EQUAL
INLET AND OUTLET BAFFLE AND FILTER:
 WISCONSIN, SEE DETAIL #10
 (OTHER STATES SEE CHART)

LIQUID CAPACITY: 122.22 GAL/IN
LOADING DESIGN: 8' 0" UNSATURATED SOIL
TANK CAN BE USED AS:
 SEPTIC/ HOLDING/ PUMP OR SIPHON
HOLDING TANK:
 OUTLET HOLE PLUGGED
 ACTUAL CAPACITY 8,000 GALLONS



TOP VIEW



SIDE VIEW

CUSTOMIZED TANKS:
 TANKS CAN BE CUSTOMIZED CONTACT WIESER CONCRETE

TANKS ARE MANUFACTURED TO MEET OR EXCEED ASTM C-1227 REQUIREMENTS

DATE:

REV. NO.

SCALE: 1/4" = 1'

DRAWN BY: SWT

DATE: JANUARY 2008

FILE: W7700

WIESER CONCRETE

W3716 US HWY10, MAIDEN ROCK, WI 54750

800-325-8456

W7700

SEPTIC MANUAL
REV. JAN. 2008

SHEET NO.

0
OF
0