

W20000 TANK SPECIFICATIONS

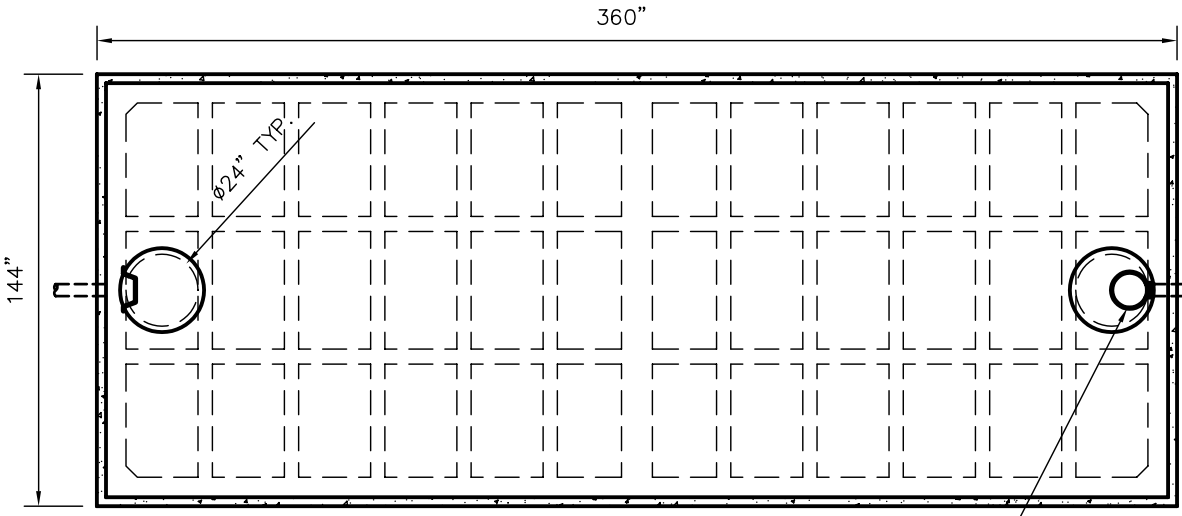
DIMENSIONS:
 WALL: 6" RIBBED
 COVER: 9" RIBBED
 BOTTOM: 9" RIBBED
 MANHOLE: 24" I.D. PRECAST CONCRETE RISER
 HEIGHT: 136" O.D.
 LENGTH: 360" O.D.
 WIDTH: 144" O.D.
 BELOW INLET: 114" O.D.
 LIQUID LEVEL: 108 1/2"
 WEIGHT: 42,000 LBS. PER SECTION
 12,600 LBS. FOR MIDDLE SECTION

INLET AND OUTLET:
 4" CAST-A-SEAL BOOT OR EQUAL
 GASKET, CAST-A-SEAL BOOT OR EQUAL
INLET AND OUTLET BAFFLE AND FILTER:
 WISCONSIN, SEE DETAIL #10
 (OTHER STATES SEE CHART)

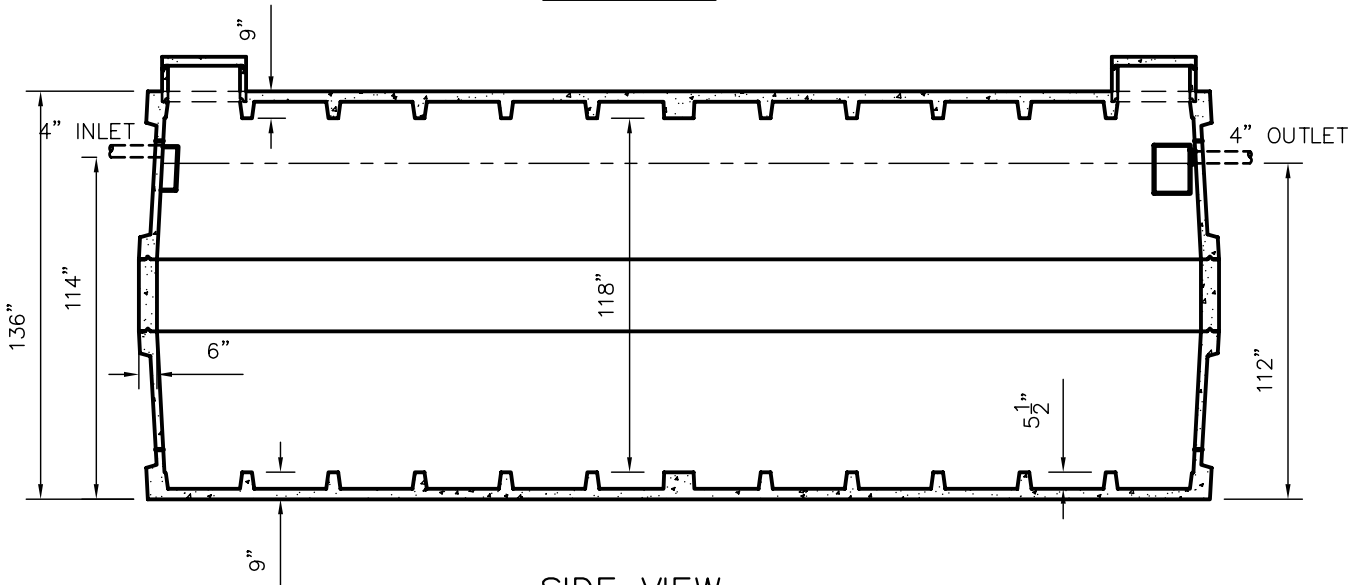
LIQUID CAPACITY: 207.00 GAL/IN

LOADING DESIGN: 8' 0" UNSATURATED SOIL

TANK CAN BE USED AS:
 SEPTIC/ HOLDING/ PUMP OR SIPHON
 OR SEPTIC/SIPHON



TOP VIEW



SIDE VIEW

CUSTOMIZED TANKS:
 TANKS CAN BE CUSTOMIZED CONTACT WIESER CONCRETE
 TANKS ARE MANUFACTURED TO MEET OR EXCEED ASTM C-1227 REQUIREMENTS

W20000	SEPTIC MANUAL	REV. JAN. 2008	DATE:
SCALE: 3/16" = 1'	DRAWN BY: SWT	DATE: JANUARY 2008	REV. NO.
WIESER CONCRETE			FILE: W20000
W3716 US HWY10, MAIDEN ROCK, WI 54750			800-325-8456
SHEET NO.			0 OF 0