

# W18000 TANK SPECIFICATIONS

DIMENSIONS:  
 WALL: 6" RIBBED  
 COVER: 9" RIBBED  
 BOTTOM: 9" RIBBED  
 MANHOLE: 24" I.D. PRECAST CONCRETE RISER  
 HEIGHT: 112" O.D.  
 LENGTH: 360" O.D.  
 WIDTH: 144" O.D.  
 BELOW INLET: 98" O.D.

WEIGHT: 42,000 LBS. PER SECTION

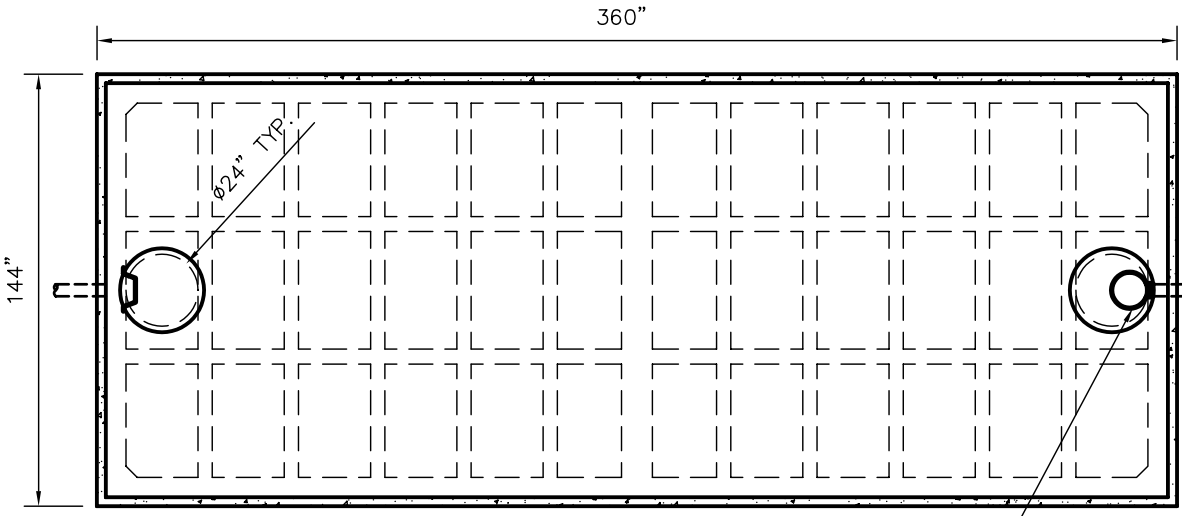
INLET AND OUTLET:  
 4" CAST-A-SEAL BOOT OR EQUAL  
 GASKET, CAST-A-SEAL BOOT OR EQUAL

INLET AND OUTLET BAFFLE AND FILTER:  
 WISCONSIN, SEE DETAIL #10  
 (OTHER STATES SEE CHART)

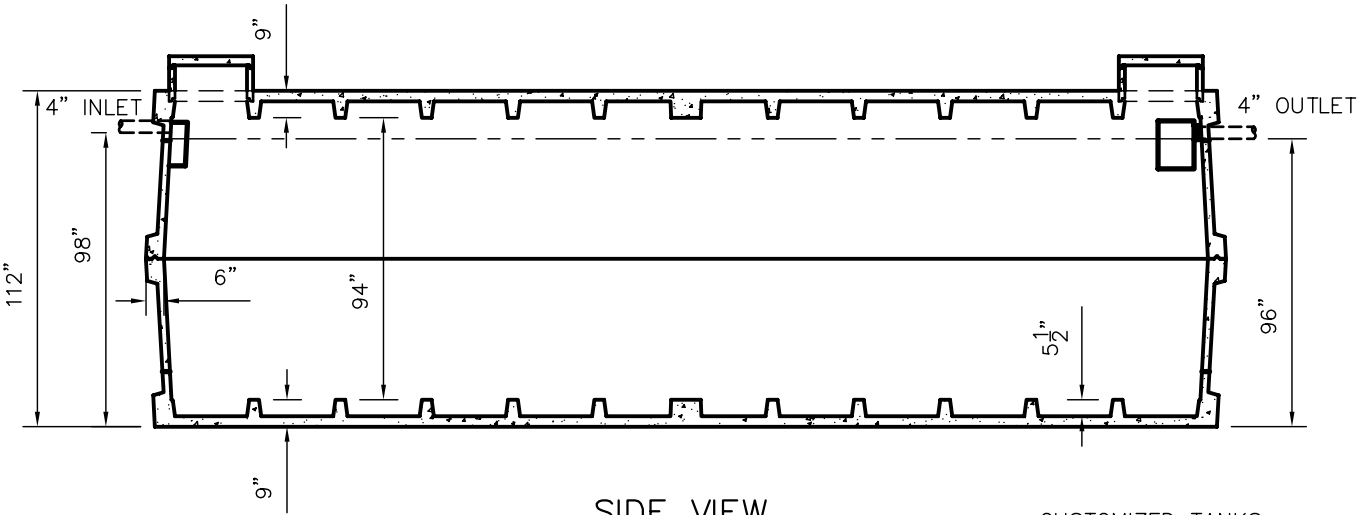
LIQUID CAPACITY: 207.0 GAL/IN

LOADING DESIGN: 8' 0" UNSATURATED SOIL

TANK CAN BE USED AS:  
 SEPTIC/ HOLDING/ PUMP OR SIPHON  
 OR SEPTIC/SIPHON



TOP VIEW



SIDE VIEW

SCALE: 3/16" = 1'	REV. NO.	DATE:
DRAWN BY: SWT		
DATE: JANUARY 2008		
FILE: W18000		
<b>WIESER CONCRETE</b>		
W3716 US HWY10, MAIDEN ROCK, WI 54750		
800-325-8456		
W18000	SEPTIC MANUAL	
	REV. JAN. 2008	
SHEET NO.	0 OF 0	

CUSTOMIZED TANKS:  
 TANKS CAN BE CUSTOMIZED CONTACT WIESER CONCRETE

TANKS ARE MANUFACTURED TO MEET OR EXCEED ASTM C-1227 REQUIREMENTS