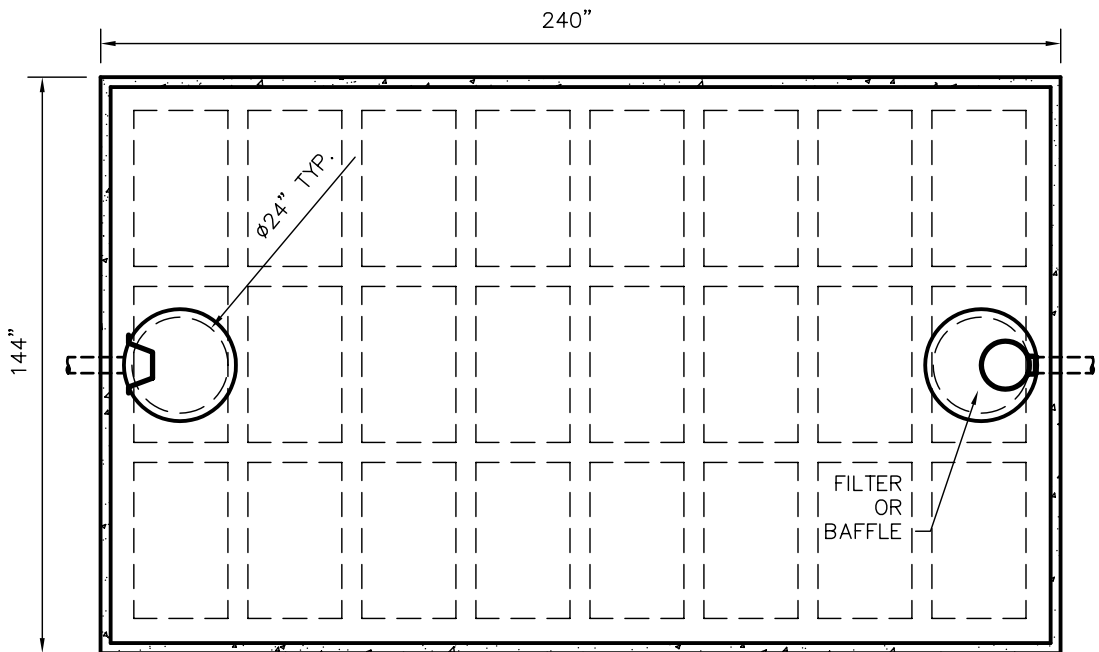


# W10000 TANK SPECIFICATIONS

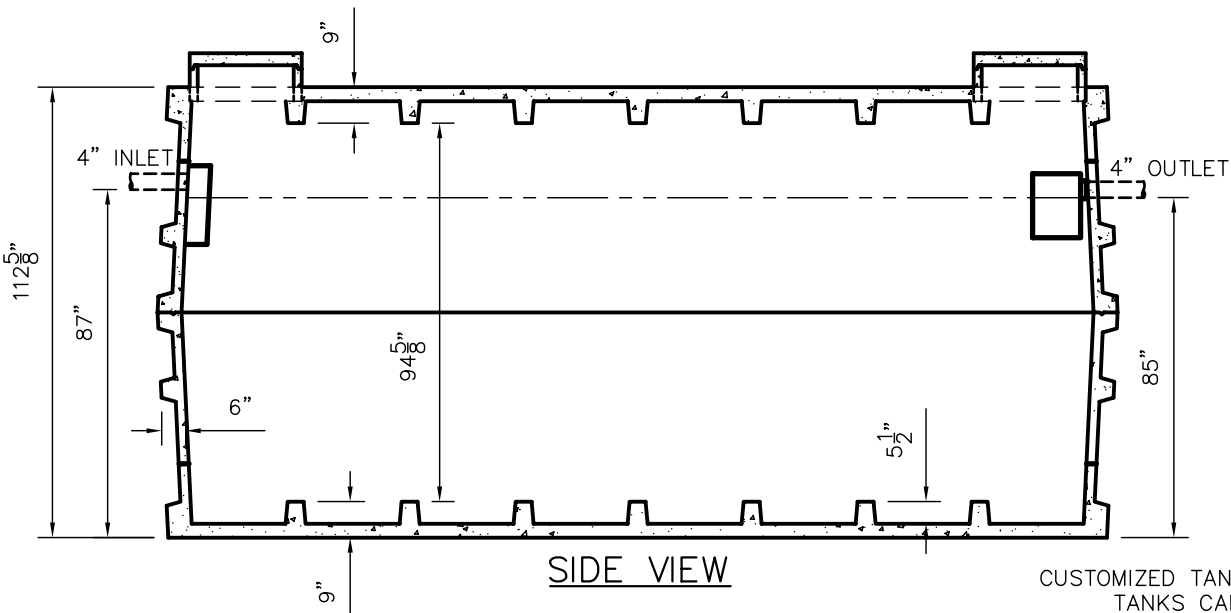


TOP VIEW

DIMENSIONS:  
 WALL: 6" RIBBED  
 COVER: 9" RIBBED  
 BOTTOM: 9" RIBBED  
 MANHOLE: 24" I.D. PRECAST CONCRETE RISER  
 HEIGHT: 112 5/8" O.D.  
 LENGTH: 240" O.D.  
 WIDTH: 144" O.D.  
 BELOW INLET: 87" O.D.  
 LIQUID LEVEL: 79"  
 WEIGHT: 29,000 LBS. PER SECTION

INLET AND OUTLET:  
 4" CAST-A-SEAL BOOT OR EQUAL  
 GASKET, CAST-A-SEAL BOOT OR EQUAL  
 INLET AND OUTLET BAFFLE AND FILTER:  
 WISCONSIN, SEE DETAIL #10  
 (OTHER STATES SEE CHART)

LIQUID CAPACITY: 127.43 GAL/IN  
 LOADING DESIGN: 8' 0" UNSATURATED SOIL  
 TANK CAN BE USED AS:  
 SEPTIC/ HOLDING/ PUMP OR SIPHON



SIDE VIEW

CUSTOMIZED TANKS:  
 TANKS CAN BE CUSTOMIZED CONTACT WIESER CONCRETE

TANKS ARE MANUFACTURED TO MEET OR EXCEED ASTM C-1227 REQUIREMENTS

SCALE: 1/4" = 1'	REV NO.	DATE:
DRAWN BY: SWT		
DATE: JANUARY 2008		
FILE: W10000		
<b>WIESER CONCRETE</b>		
W3716 US HWY10, MAIDEN ROCK, WI 54750		
800-325-8456		
W10000	SHEET NO.	
SEPTIC MANUAL	0 OF 0	
REV. JAN. 2008		