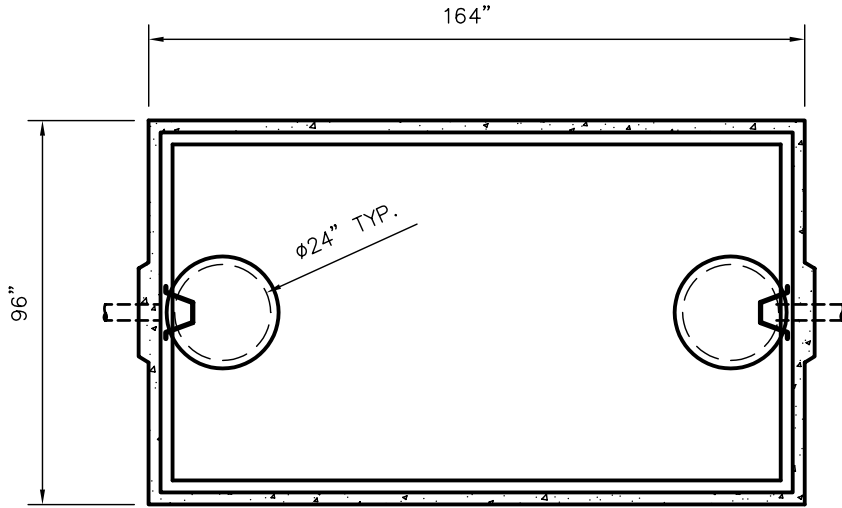


WLP2000-P GREASE INTERCEPTOR TANK SPECIFICATIONS



TOP VIEW

DIMENSIONS:
WALL: 3"
BOTTOM: 3"

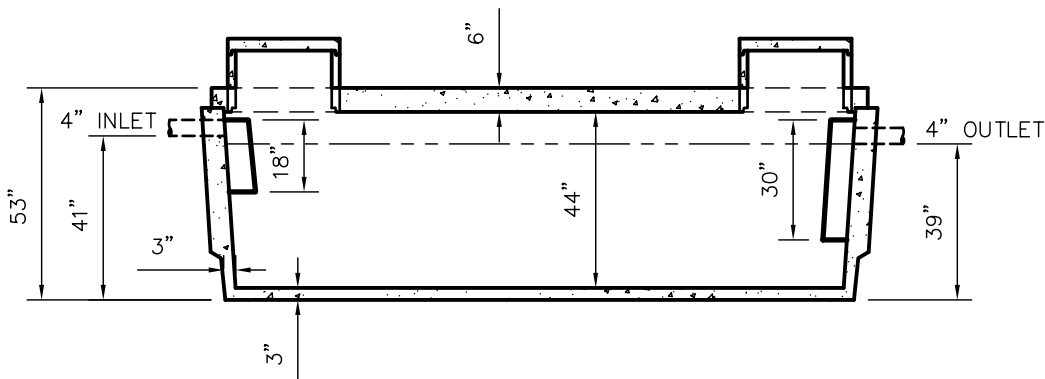
COVER: 6"
MANHOLE: 24" I.D. PRECAST CONCRETE RISER
HEIGHT: 53" O.D.
LENGTH: 164" O.D.
WIDTH: 96" O.D.
BELOW INLET: 41" O.D.
LIQUID LEVEL: 36"
WEIGHT: 21,120 LBS.

INLET AND OUTLET:
4" CAST-A-SEAL BOOT OR EQUAL
GASKET, CAST-A-SEAL BOOT OR EQUAL
INLET AND OUTLET Baffle AND FILTER:
AS SHOWN

LIQUID CAPACITY: 56.27 GAL/IN

LOADING DESIGN: 8' 0" UNSATURATED SOIL

TANK CAN BE USED AS:
GREASE INTERCEPTOR



SIDE VIEW

CUSTOMIZED TANKS:
TANKS CAN BE CUSTOMIZED CONTACT WIESER CONCRETE
TANKS ARE MANUFACTURED TO MEET OR EXCEED ASTM C-1227 REQUIREMENTS

SCALE: 1/4" = 1'	REV NO.	DATE:	
DRAWN BY: SWT			
DATE: JANUARY 2008			
FILE: WLP2000GI-P			
WIESER CONCRETE			
W3716 US HWY10, MAIDEN ROCK, WI 54750			
800-325-8456			
WLP2000GI-P	SEPTIC MANUAL		
	REV. JAN. 2008		
SHEET NO.			
0	OF		
0			