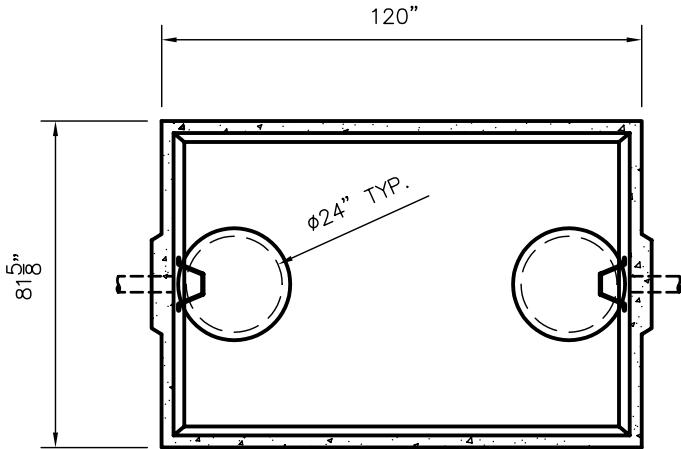


WLP1250-P GREASE INTERCEPTOR TANK SPECIFICATIONS



TOP VIEW

DIMENSIONS:

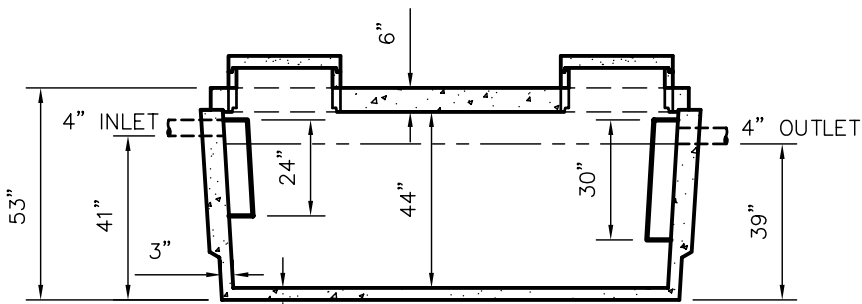
- WALL: 3"
- BOTTOM: 3"
- COVER: 6"
- MANHOLE: 24" I.D. PRECAST CONCRETE RISER
- HEIGHT: 53" O.D.
- LENGTH: 120" O.D.
- WIDTH: 81 5/8" O.D.
- BELOW INLET: 41" O.D.
- LIQUID LEVEL: 36"
- WEIGHT: 11,888 LBS.

- INLET AND OUTLET:**
4" CAST-A-SEAL BOOT OR EQUAL
GASKET, CAST-A-SEAL BOOT OR EQUAL
- INLET AND OUTLET Baffle AND FILTER:**
WISCONSIN, SEE DETAIL #10

LIQUID CAPACITY: 34.98 GAL/IN

LOADING DESIGN: 8' 0" UNSATURATED SOIL

TANK CAN BE USED AS:
GREASE INTERCEPTOR



SIDE VIEW

CUSTOMIZED TANKS:
TANKS CAN BE CUSTOMIZED CONTACT WIESER CONCRETE
TANKS ARE MANUFACTURED TO MEET OR EXCEED ASTM C-1227 REQUIREMENTS

SCALE: 1/4" = 1'	REV NO.	DATE:	
DRAWN BY: SWT			
DATE: JANUARY 2008			
FILE: WLP1250GI-P			
WIESER CONCRETE			
W3716 US HWY10, MAIDEN ROCK, WI 54750			
800-325-8456			
WLP1250GI-P	SEPTIC MANUAL		
	REV. JAN. 2008		
SHEET NO.			
0	OF		
0			