

# W850-P GREASE INTERCEPTOR TANK SPECIFICATIONS

**DIMENSIONS:**

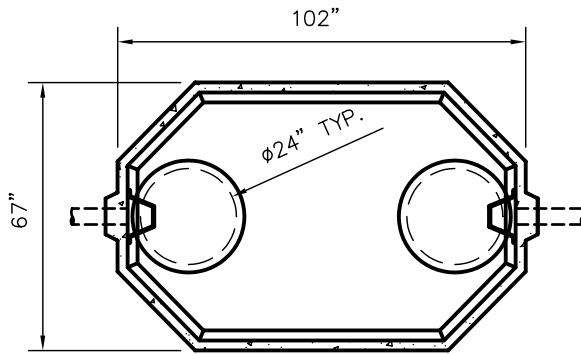
- WALL: 2 1/2"
- BOTTOM: 2 1/2"
- COVER: 4"
- MANHOLE: 24" I.D. PRECAST CONCRETE RISER
- HEIGHT: 57" O.D.
- LENGTH: 102" O.D.
- WIDTH: 67" O.D.
- BELOW INLET: 46 1/2" O.D.
- LIQUID LEVEL: 42"
- WEIGHT: 6,609 LBS.

- INLET AND OUTLET:  
4" CAST-A-SEAL BOOT OR EQUAL  
GASKET, CAST-A-SEAL BOOT OR EQUAL
- INLET AND OUTLET Baffle AND FILTER:  
WISCONSIN, SEE DETAIL #10

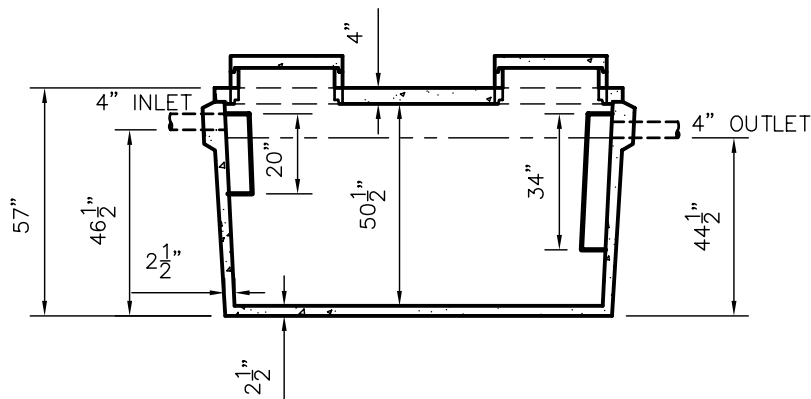
LIQUID CAPACITY: 21.00 GAL/IN

LOADING DESIGN: 8' 0" UNSATURATED SOIL

TANK CAN BE USED AS:  
GREASE INTERCEPTOR



TOP VIEW



SIDE VIEW

CUSTOMIZED TANKS:  
TANKS CAN BE CUSTOMIZED CONTACT WIESER CONCRETE  
TANKS ARE MANUFACTURED TO MEET OR EXCEED ASTM C-1227 REQUIREMENTS

SCALE: 1/4" = 1'	REV NO.	DATE:
DRAWN BY: SWT		
DATE: JANUARY 2008		
FILE: W850GI-P		
<b>WIESER CONCRETE</b>		
W3716 US HWY10, MAIDEN ROCK, WI 54750		
800-325-8456		
W850GI-P	SEPTIC MANUAL	
	REV. JAN. 2008	
SHEET NO.	0 OF 0	