

# W1000-P GREASE INTERCEPTOR TANK SPECIFICATIONS

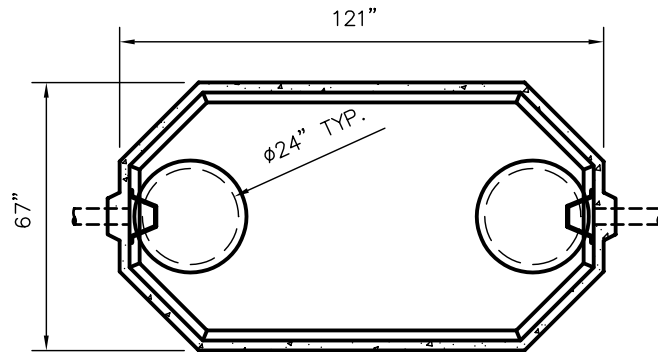
## DIMENSIONS:

WALL: 2 1/2"  
 BOTTOM: 2 1/2"  
 COVER: 6"  
 MANHOLE: 24" I.D. PRECAST CONCRETE RISER  
 HEIGHT: 57 1/2" O.D.  
 LENGTH: 121" O.D.  
 WIDTH: 67" O.D.  
 BELOW INLET: 46 1/2" O.D.  
 LIQUID LEVEL: 42"  
 WEIGHT: 8,300 LBS.

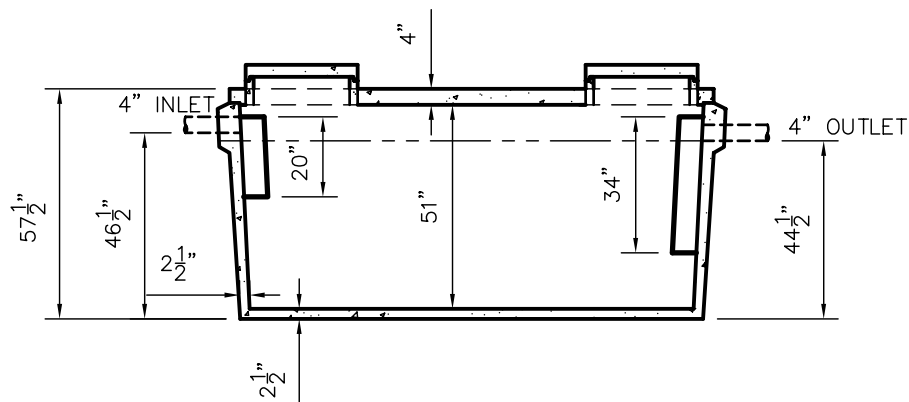
INLET AND OUTLET:  
 4" CAST-A-SEAL BOOT OR EQUAL  
 GASKET, CAST-A-SEAL BOOT OR EQUAL  
 INLET AND OUTLET Baffle AND FILTER:  
 WISCONSIN, SEE DETAIL #10

LIQUID CAPACITY: 26.00 GAL/IN

LOADING DESIGN: 8' 0" UNSATURATED SOIL



TOP VIEW



SIDE VIEW

TANK CAN BE USED AS:  
GREASE INTERCEPTOR

## CUSTOMIZED TANKS:

TANKS CAN BE CUSTOMIZED CONTACT WIESER CONCRETE

TANKS ARE MANUFACTURED TO MEET OR EXCEED ASTM C-1227 REQUIREMENTS

DATE:

REV NO.

SCALE: 1/4" = 1'

DRAWN BY: SWT

DATE: JANUARY 2008

FILE: W1000GI-P

**WIESER CONCRETE**

W3716 US HWY10, MAIDEN ROCK, WI 54750

800-325-8456

W1000GI-P

SEPTIC MANUAL  
REV. JAN. 2008

SHEET NO.

0 OF 0