

W2500-MR GREASE INTERCEPTOR TANK SPECIFICATIONS

DIMENSIONS:

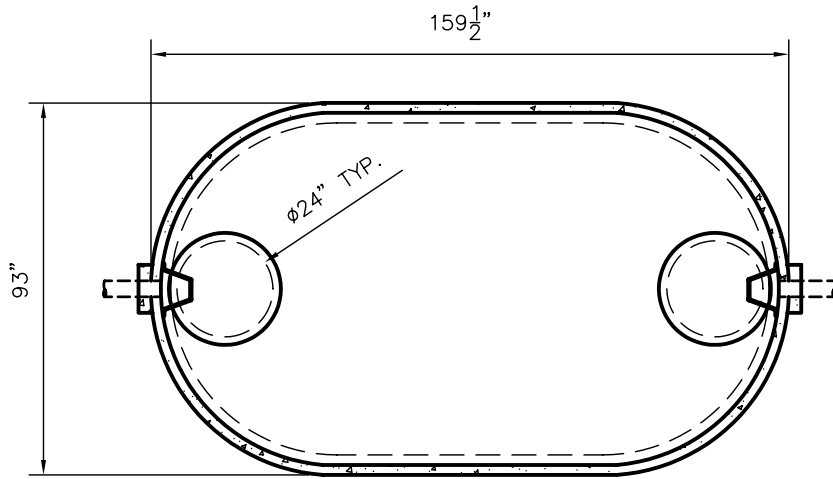
WALL: 2 1/2"
 BOTTOM: 3"
 COVER: 6"
 MANHOLE: 24" I.D. PRECAST CONCRETE RISER
 HEIGHT: 71" O.D.
 LENGTH: 159 1/2" O.D.
 WIDTH: 93" O.D.
 BELOW INLET: 57" O.D.
 LIQUID LEVEL: 51"
 WEIGHT: BOTTOM 10,500 LBS.
 COVER 6,340 LBS.

INLET AND OUTLET:
 4" CAST-A-SEAL BOOT OR EQUAL
 GASKET, CAST-A-SEAL BOOT OR EQUAL
 INLET AND OUTLET BAFFLE:
 AS SHOWN

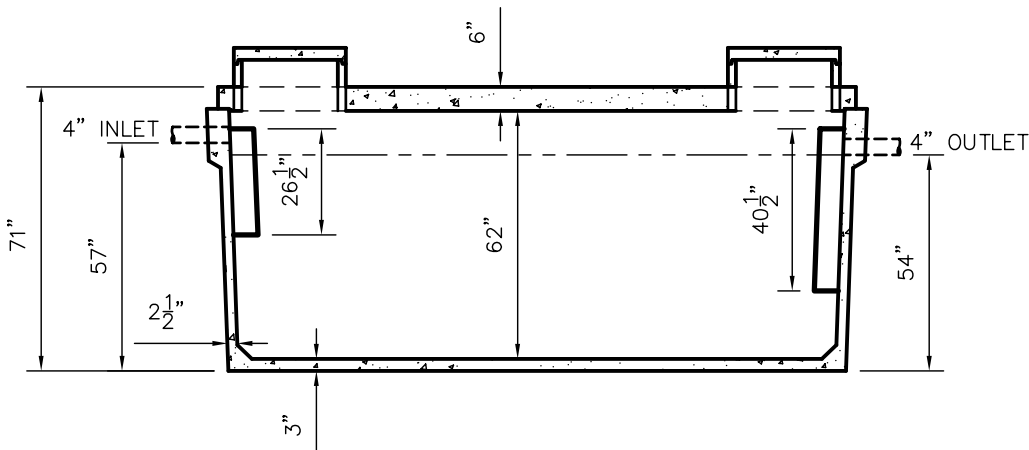
LIQUID CAPACITY: 49.46 GAL/IN

LOADING DESIGN: 8' 0" UNSATURATED SOIL

TANK CAN BE USED AS:
 GREASE INTERCEPTOR



TOP VIEW



SIDE VIEW

CUSTOMIZED TANKS:
 TANKS CAN BE CUSTOMIZED CONTACT WIESER CONCRETE

TANKS ARE MANUFACTURED TO MEET OR EXCEED ASTM C-1227 REQUIREMENTS

SCALE: 1/4" = 1'	REV NO.	DATE:
DRAWN BY: SWT		
DATE: JANUARY 2008		
FILE: W2500GI-MR		
WIESER CONCRETE		
W3716 US HWY10. MAIDEN ROCK, WI 54750		
800-325-8456		
W2500GI-MR	SEPTIC MANUAL	
	REV. JAN. 2008	
SHEET NO.	0 OF 0	