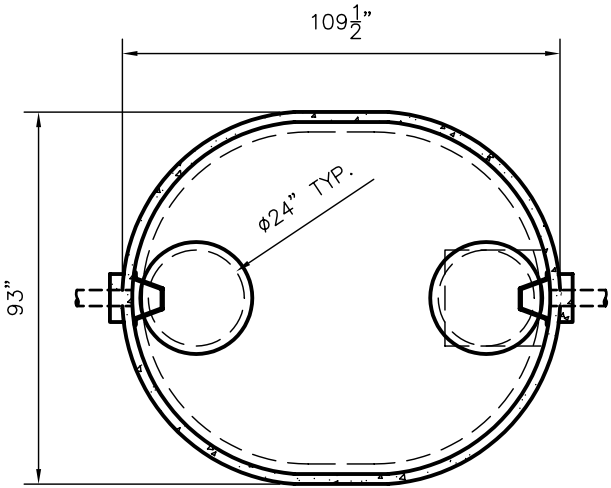


W1565-MR GREASE INTERCEPTOR TANK SPECIFICATIONS



TOP VIEW

DIMENSIONS:

- WALL: 2 1/2"
- BOTTOM: 3"
- COVER: 5"
- MANHOLE: 24" I.D. PRECAST CONCRETE RISER
- HEIGHT: 69 1/2" O.D.
- LENGTH: 109 1/2" O.D.
- WIDTH: 93" O.D.
- BELOW INLET: 57" O.D.
- LIQUID LEVEL: 51"
- WEIGHT: 10,840 LBS.

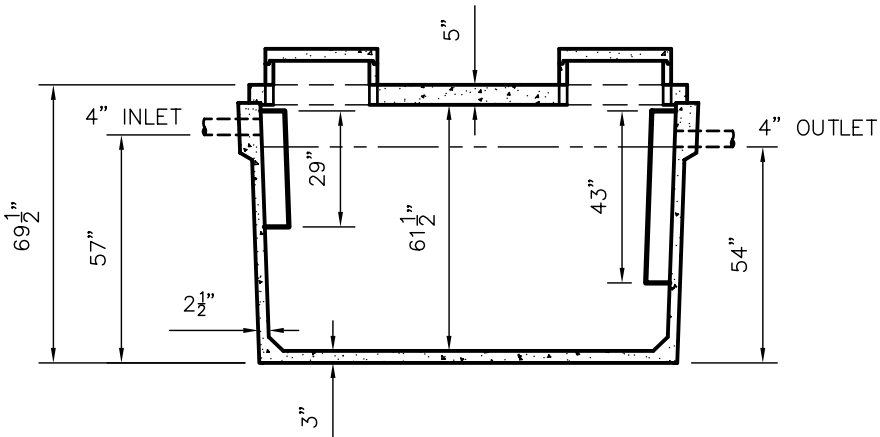
INLET AND OUTLET:
4" CAST-A-SEAL BOOT OR EQUAL
GASKET, CAST-A-SEAL BOOT OR EQUAL

INLET AND OUTLET BAFFLE:
AS SHOWN

LIQUID CAPACITY: 30.69 GAL/IN

LOADING DESIGN: 8' 0" UNSATURATED SOIL

TANK CAN BE USED AS:
GREASE INTERCEPTOR



SIDE VIEW

CUSTOMIZED TANKS:
TANKS CAN BE CUSTOMIZED CONTACT WIESER CONCRETE

TANKS ARE MANUFACTURED TO MEET OR EXCEED ASTM C-1227 REQUIREMENTS

SCALE: 1/4" = 1'	REV NO.	DATE:	
DRAWN BY: SWT			
DATE: JANUARY 2008			
FILE: W1565GI-MR			
WIESER CONCRETE			
W3716 US HWY10, MAIDEN ROCK, WI 54750			
800-325-8456			
W1565GI-MR	SEPTIC MANUAL		
	REV. JAN. 2008		
SHEET NO.		OF	
0		0	