

W2000 1000-FDL TANK SPECIFICATIONS

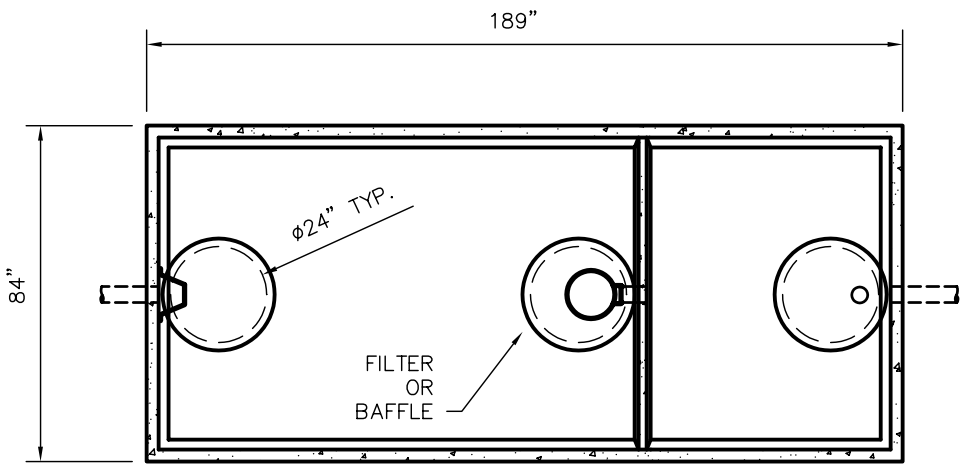
DIMENSIONS:
 WALL: 3"
 BOTTOM: 3"
 COVER: 6"
 MANHOLE: 24" I.D. PRECAST CONCRETE RISER
 HEIGHT: 71" O.D.
 LENGTH: 189" O.D.
 WIDTH: 84" O.D.
 BELOW INLET: 58" O.D.
 LIQUID LEVEL: 53"
 WEIGHT: 23,000 LBS.

INLET AND OUTLET:
 4" CAST-A-SEAL BOOT OR EQUAL
 GASKET, CAST-A-SEAL BOOT OR EQUAL
INLET AND OUTLET BAFFLE AND FILTER:
 WISCONSIN, SEE DETAIL #10

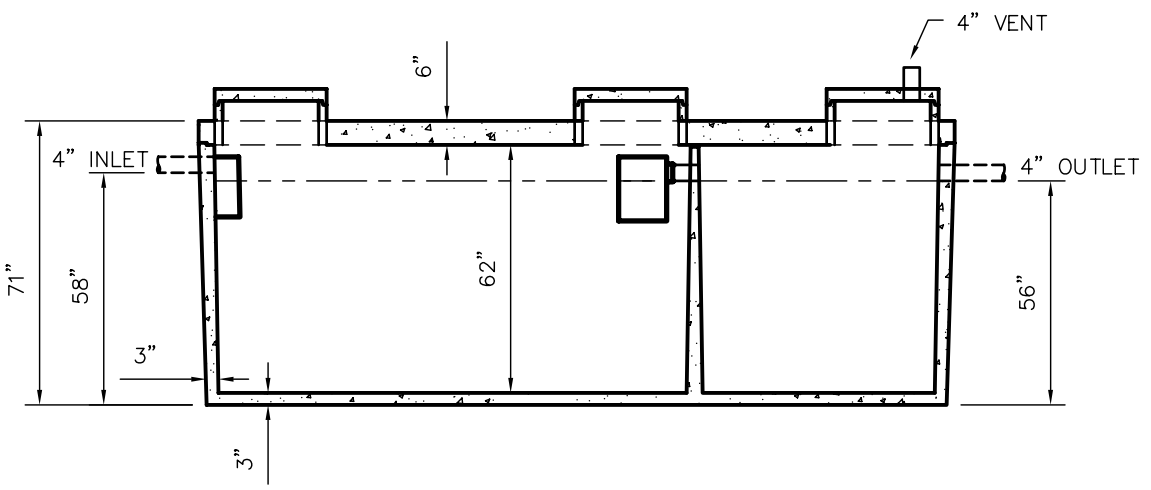
LIQUID CAPACITY: 38.13 GAL/IN (SEPTIC)
 18.98 GAL/IN (PUMP)

LOADING DESIGN: 8' 0" UNSATURATED SOIL

TANK CAN BE USED AS:
 SEPTIC/SEPTIC, SEPTIC/PUMP
 OR SEPTIC/SIPHON



TOP VIEW



SIDE VIEW

CUSTOMIZED TANKS:
 TANKS CAN BE CUSTOMIZED CONTACT WESER CONCRETE
 TANKS ARE MANUFACTURED TO MEET OR EXCEED ASTM C-1227 REQUIREMENTS

SCALE: 1/4" = 1'	REV NO.	DATE:	
DRAWN BY: SWT			
DATE: JANUARY 2008			
FILE: W2000 1000-FDL			
WESER CONCRETE			
W3716 US HWY10. MAIDEN ROCK, WI 54750			
800-325-8456			
W2000 1000-FDL	SEPTIC MANUAL		
	REV. JAN. 2008		
SHEET NO.			
0	OF		
/	0		