

# WLP2000-FDL GREASE INTERCEPTOR TANK SPECIFICATIONS

**DIMENSIONS:**

WALL: 3"  
 BOTTOM: 3"  
 COVER: 6"  
 MANHOLE: 24" I.D. PRECAST CONCRETE RISER  
 HEIGHT: 54 1/2" O.D.  
 LENGTH: 175" O.D.  
 WIDTH: 84" O.D.  
 BELOW INLET: 43" O.D.  
 LIQUID LEVEL: 38"  
 WEIGHT: 17,070 LBS.

**INLET AND OUTLET:**

4" CAST-A-SEAL BOOT OR EQUAL  
 GASKET, CAST-A-SEAL BOOT OR EQUAL

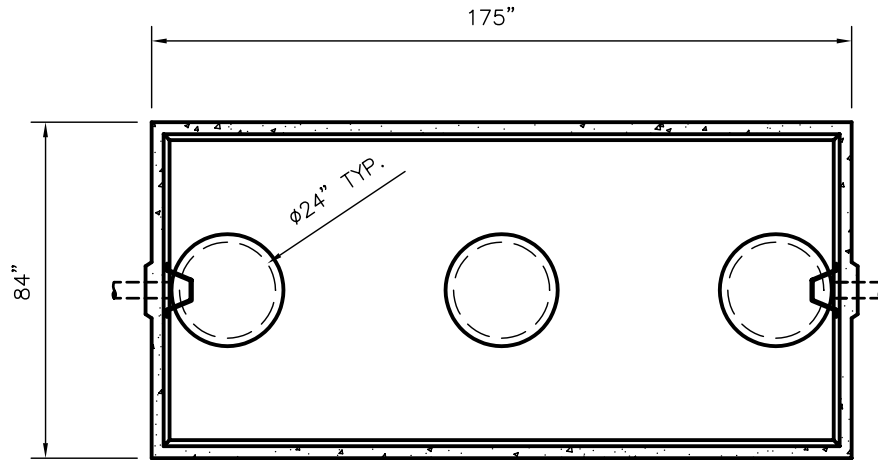
**INLET AND OUTLET Baffle AND FILTER:**  
 WISCONSIN, SEE DETAIL #10

LIQUID CAPACITY: 56.63 GAL/IN

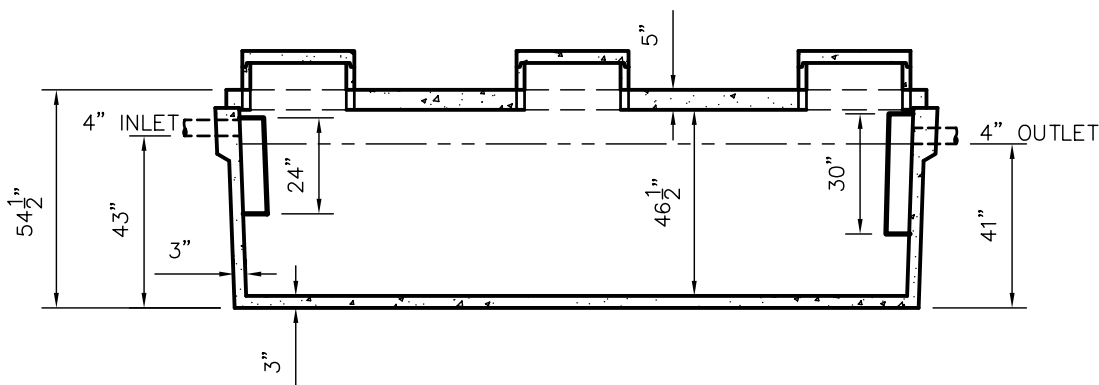
LOADING DESIGN: 8' 0" UNSATURATED SOIL

TANK CAN BE USED AS:

GREASE INTERCEPTOR



TOP VIEW



SIDE VIEW

**CUSTOMIZED TANKS:**

TANKS CAN BE CUSTOMIZED CONTACT WIESER CONCRETE

TANKS ARE MANUFACTURED TO MEET OR EXCEED ASTM C-1227 REQUIREMENTS

SCALE: 1/4" = 1'	REV NO.	DATE:	
DRAWN BY: SWT			
DATE: JANUARY 2008			
FILE: WLP2000GI-FDL			
<b>WIESER CONCRETE</b>			
W3716 US HWY10. MAIDEN ROCK, WI 54750			
800-325-8456			
WLP2000GI-FDL	SEPTIC MANUAL		
	REV. JAN. 2008		
SHEET NO.			
0	OF		
0			