

W2500-FDL GREASE INTERCEPTOR TANK SPECIFICATIONS

DIMENSIONS:

- WALL: 3"
- BOTTOM: 3"
- COVER: 5"
- MANHOLE: 24" I.D. PRECAST CONCRETE RISER
- HEIGHT: 71" O.D.
- LENGTH: 166" O.D.
- WIDTH: 81" O.D.
- BELOW INLET: 58" O.D.
- LIQUID LEVEL: 53"
- WEIGHT: 18,280LBS.

INLET AND OUTLET:

- 4" CAST-A-SEAL BOOT OR EQUAL GASKET, CAST-A-SEAL BOOT OR EQUAL

INLET AND OUTLET Baffle AND FILTER:
WISCONSIN, SEE DETAIL #10

LIQUID CAPACITY: 49.17 GAL/IN

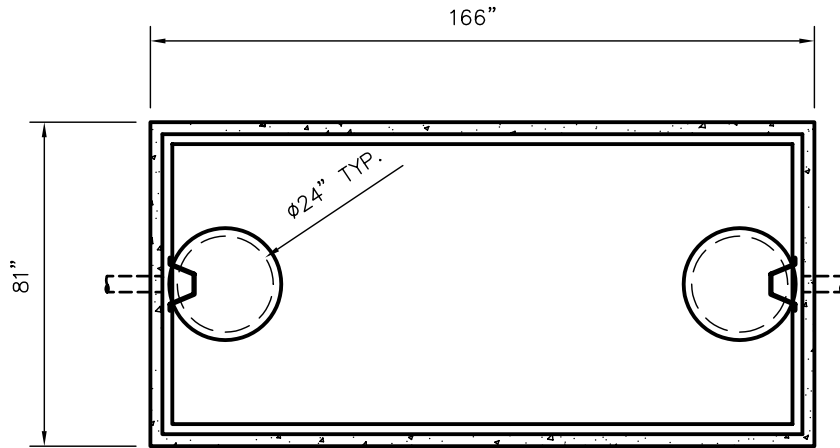
LOADING DESIGN: 8' 0" UNSATURATED SOIL

HOLDING TANK:

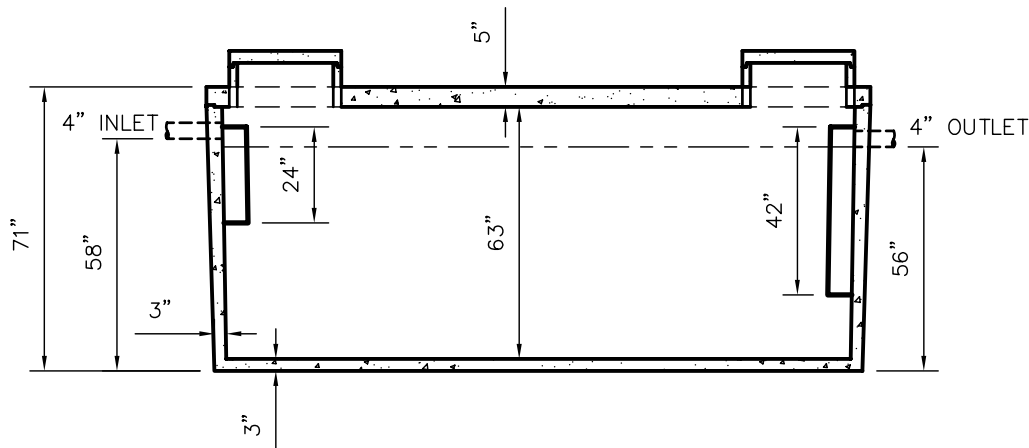
- OUTLET HOLE PLUGGED
- ACTUAL CAPACITY: 2,720 GALLONS

TANK CAN BE USED AS:

GREASE INTERCEPTOR



TOP VIEW



SIDE VIEW

CUSTOMIZED TANKS:

TANKS CAN BE CUSTOMIZED CONTACT WIESER CONCRETE

TANKS ARE MANUFACTURED TO MEET OR EXCEED ASTM C-1227 REQUIREMENTS

SCALE: 1/4" = 1'	REV NO.	DATE:	
DRAWN BY: SWT			
DATE: JANUARY 2008			
FILE: W2500GI-FDL			
WIESER CONCRETE			
W3716 US HWY10, MAIDEN ROCK, WI 54750			
800-325-8456			
W2500GI-FDL	SEPTIC MANUAL		
	REV. JAN. 2008		
SHEET NO.			
0	OF		
0			